

PEMAX GROUP
FLEXSTONE

Flexstone Details

Flexstone is the newest natural stone cladding material. It is lightweight, flexible, and colorful with endless application possibilities. The introduction of this material satisfies the need for an adaptable and weather-resistant stone decorating material for indoor and outdoor use. The revolutionary technology behind this material allows it to be easily adhered to any standard construction surface.

The individual sheets are all naturally different from each other. Flexstone is a natural stone layer attached to a fiber glass/polyester resin substrate which acts as the back of the material to provide flexibility and strength. Geologically, two sheets cannot be identical, and as such Flexstone maintains its beauty as a natural stone.



Standard



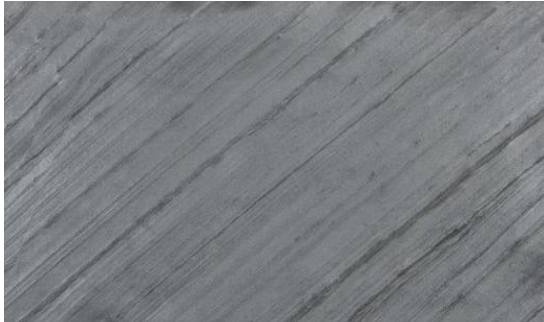
Black



Ocean



Silver Grey



Ocean Black



California Gold



Standard



Autumn Rustic



Indian Autumn



Tan



Silver Shine



Silver Shine Gold



Golden



Grey



Jeera Green



Silver Galaxy

Standard



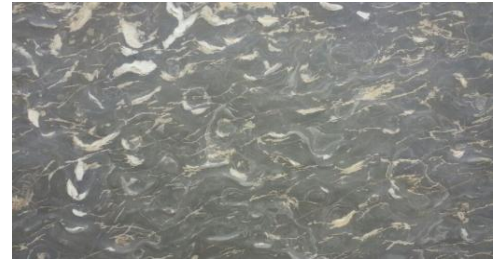
S. White



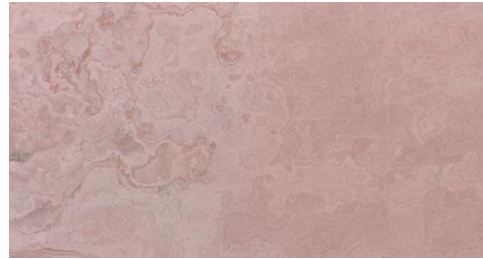
Burning Forest



Multi Pink



Rustic Wave



Terra Red



Multicolor



Shine Copper



Copper

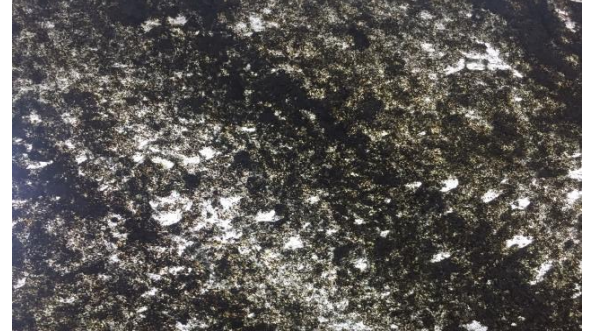
Translucent



K. Black/Mongolian



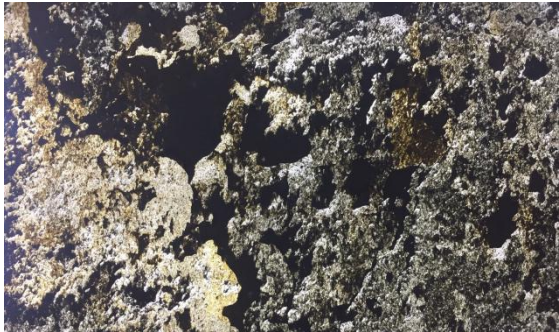
Ocean Green



Silver Galaxy Gold/Black Star Gold



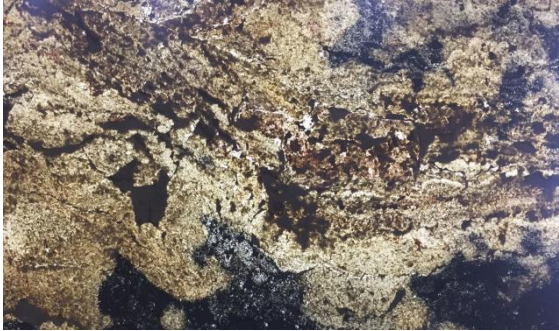
Ocean Black/Black Line



California/Forest



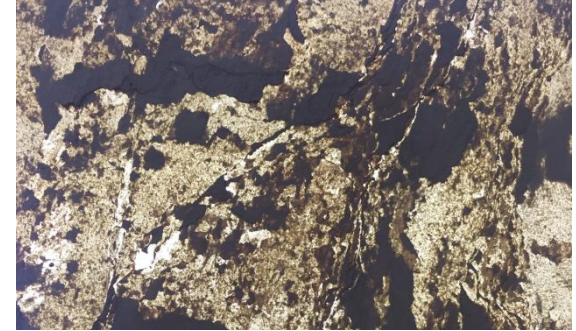
Translucent



Autumn Rustic



Indian Autumn



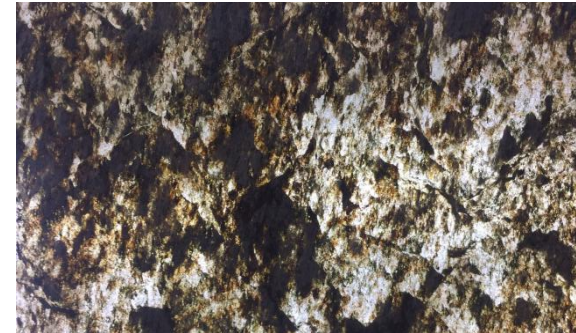
Tan



Silver Shine



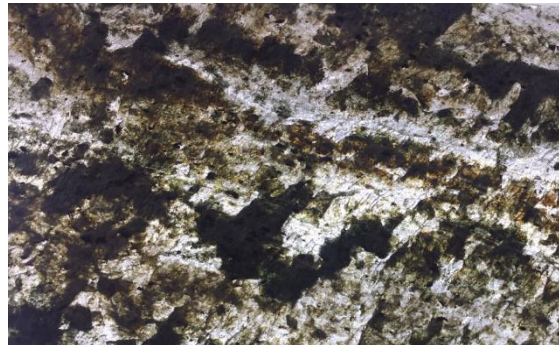
Silver Shine Gold



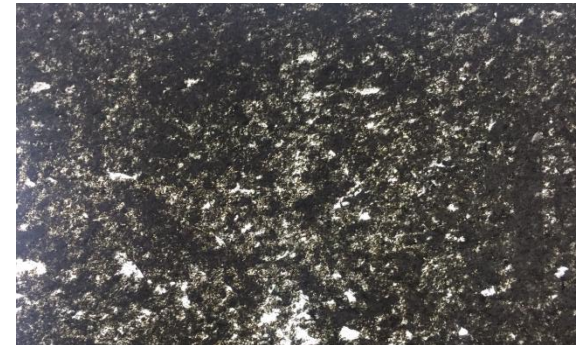
Golden



Gold Green



Jeera Green

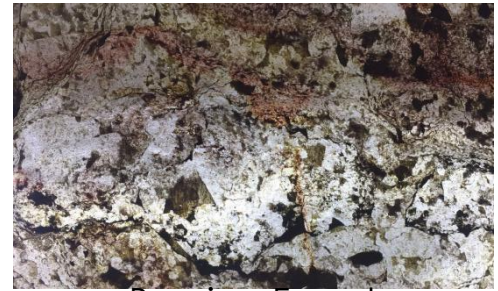


Silver Galaxy/Black Star

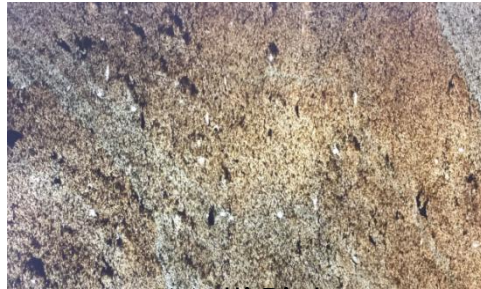
Translucent



S. White/Autumn White



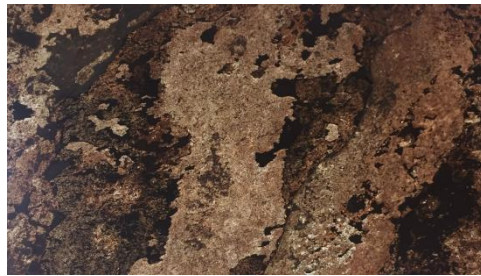
Burning Forest



Multi Pink



Rustic Wave



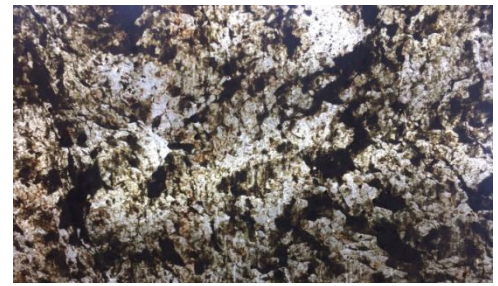
Terra Red



Multicolor



Deoli Green/Auburn



Copper



PEMAX GROUP

For more information please see
www.pemaxgroup.com

Or contact us directly:
+91 9767625949
info@pemaxindia.com